

GM RAILING® **News**

Epic - Fully-glazed railing EN 1991-1-1 Kat. C5

> Editorial

The seemingly impossible becomes possible

> Applications

GM RAILING® Epic - The patented fully-glazed railing especially for architecture in the event area

GM RAILING® Epic - The basis for safety, wellbeing, and freedom of movement

NEW

GM RAILING® Solo - Planning manual for the re-processor

> Award

GM RAILING® Windoorail received award





GM RAILING® Epic - To make the seemingly impossible possible has always been our motivation for finding solutions.

In the 6th issue of our customer magazine, we are pleased to present a new addition to our range of GM RAILING® fully-glazed railings, the meanwhile 8th type series.

With the development of GM RAILING® Epic, we present you a fully-glazed railing system, which was inspected according to category B of TRAV (Technical rules for the use of safety glazing)

and is suited to take up beam loads of up to 3 kN/m. Thus, GM RAILING® Epic also corresponds to the load parameters according to EN 1991-1-1, category C5, with application requirements for areas with a possible crowd. Today, architecture without glass in the railing area is almost unimaginable, and it increasingly pushes materials like, for example, wood and metal into the background.

Using glass, areas are structured and opened up, glass offers an undisturbed view to the outside, and with an unobstructed incidence of light, there is a possibility to develop areas behind the glass in a targeted manner at the usage as well as at the design level. GM RAILING® Epic was especially developed for areas, to which high static requirements apply.


Bernhard Feigl, CEO

Applications

GM RAILING® Epic - The patented fully-glazed railing especially for architecture in the event area

Sports stadiums, theatres, discotheques, etc. are exposed to very high loads due to the big crowds.

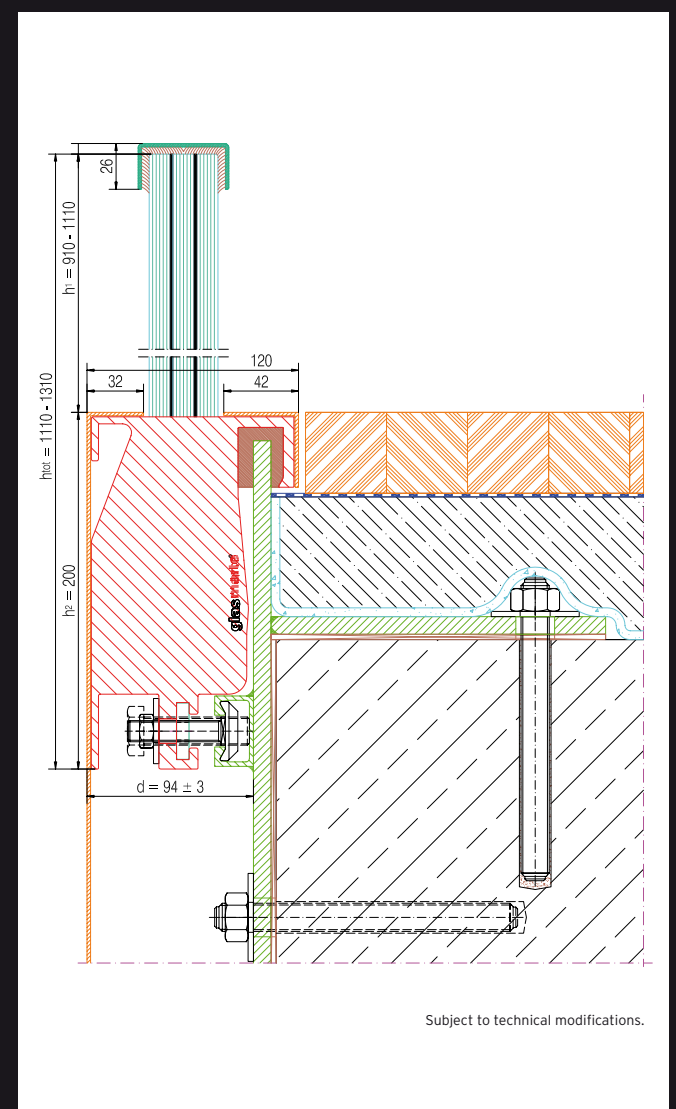
Due to their transparency, fully-glazed railings are especially suited for these spectator and demarcation areas of entertainment complexes of any kind. The difficulty is to fulfil the high static requirements applying to these entertainment complexes. With GM RAILING® Epic, we are now able to offer a fully-glazed railing series also for areas requiring a high protection target due to the hazard potential, which fulfils this requirement and is designed with the customary high quality standard.

GM RAILING® Epic is designed for loads according to TRAV of up to 3 kN/m of line load at the handrail and according to EN 1991-1-1, category C5. As all the type series of the GM RAILING® family, GM RAILING® Epic, too, impresses with a high degree of pre-manufacture and is thus installed on site in a very effective, quick and assembly-friendly manner. Since glass and structure are connected with one another at the factory already, cavity-free and absolutely uniform

mounting of the glass in the clamping area is guaranteed for GM RAILING® Epic as for all other GM RAILING® fully-glazed railings. The adhesion, which is executed over the entire length observing highest quality requirements, reduces deflections of the system, substantially decreases the risk of breaking, and prevents the penetration of freezing moisture between glass and metal.

With the adhesion, subsequent shifting of wedges or other antiquated fixing solutions is excluded, too. GM RAILING® Epic supplements the fully-glazed railing range. This fully-glazed railing forms a protective wall to the event going on and enables a perfect view, which is not disturbed by any vertical bracing.

GM RAILING® Epic



GM RAILING® Epic

- Flexible, safe, brilliantly simple
- Inspected acc. to TRAV Cat. B for beam loads of up to 3 kN/m
- Corresponds to EN 1991-1-1:2003, Cat. C5
- General certificate of approval (ABP) TRAV-conforming with type statics*
- Pre-manufactured glass modules as complete construction elements halve assembly times.
- Optimal, cavity-free glass mounting, continuously adjustable
- Drill-free embedding of the glass without stress peaks due to local shims or profile tape at the glass
- 1000-fold approved fully-glazed railing with the most comprehensive product range
- Highest safety due to hundreds of original component tests by an authorised materials testing gency
- Comprehensive technical support

* currently being prepared



GM RAILING® Epic - The fully-glazed guardrail for particularly exposed locations

The feeling of safety is the basis for wellbeing and freedom of movement.

In metropolitan areas, freely available living and office space is getting less and less, and for the purpose of an effective provision of space, the buildings are getting higher and higher. With an increasing fall height for applications outdoors, the wind loads, which the railing has to withstand, are enormously increasing as well. GM RAILING® Epic confidently faces beam loads of up to 3 kN/m. For GM RAILING® Epic, too, the substructure is part of the steel construction, and as with the approved fully-glazed railing system GM RAILING® Solo, optimisations of the prize may thus also be generated. With this GM RAILING® type series, there are hardly any limits to the use of a fully-glazed railing on terraces and balconies with fall heights of far more than 20 metres.

NEW

The planning manual for GM RAILING® Solo revolutionises the ordering process and minimises the delivery period

For the fully-glazed railing series GM RAILING® Solo, we elaborated a sophisticated planning manual, which offers the processor the advantage of undertaking the work preparation him-/herself.

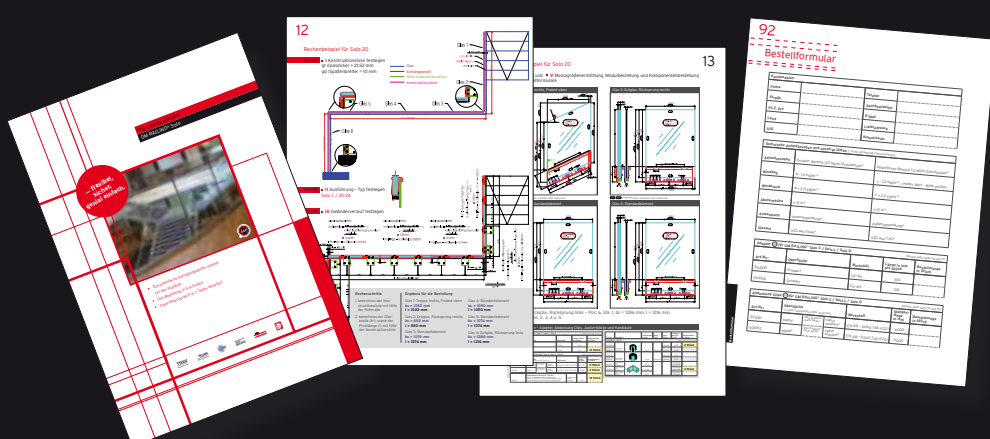
The required dimensions are easily and quickly determined with default equations and entered into the ordering forms provided with the required quantity.

This type of ordering for fully-glazed railings substantially minimises the delivery period and the price. With exact detail drawings of the different railing geometries, the individual ordering sheets specify the required glass modules; the processor simply adds quantities and dimensions. Linear glazing with various inside and outside corners, stairs or ramps - almost anything is possible with the planning manual for GM RAILING® Solo.

With the integration of the meanwhile very popular GM RAILING® expert programme into the planning man-

ual, delivery periods are reduced to 7 days. Ordering sheets corresponding to the expert programme are separately marked. Widths of 1000/1200/1500/2000 mm at a height of 1000 mm are available in various glass thicknesses and qualities for linear fully-glazed railings and can be delivered following receipt of the signed order confirmation within 7 work days.**

Inform yourself about the unique and complex planning manual for GM RAILING® Solo and the clear advantages on our homepage www.gm-railing.com.



** see Terms of Delivery Expert Programme

Awards



“red dot award” for GM WINDOORAIL®

GM RAILING® received the “red dot award” 2009 for product design for the new development GM WINDOORAIL®, the glass railing for French windows

On 29th June 2009, the awards show took place at the Essen Aalto Theatre, which provided a very worthy atmosphere.

Last year, Glas Marte was among the prize winners with the product GM WINDOORAIL®, and we were very proud to receive the “red dot award” for product design. Draft, development and design of the large and diversified product range of Glas Marte are undertaken in-house.

A heterogeneous team of specialists from the most different technical areas and industries is responsible for development and design.

With customer-oriented work and an intensive interest in architectural trends, ideas are generated, which are implemented and executed by our in-house development team with years of experience, inventiveness and love for detail. Thus, Glas Marte is able to convince as one of the most

traditional companies in the sector of glass processing worldwide with intelligent, user-friendly and high-quality product series.

Announcement

GM RAILING® on “fensterbau frontale” 2010 in Nürnberg

In March 2010, GM RAILING® will present themselves for the first time with their own stand at the “fensterbau frontale” 2010 trade fair.



At the “fensterbau frontale” 2008 trade fair, GM RAILING® received an innovation award for GM RAILING® Plan. In 2010, the team of GM RAILING® will show the proven fully-glazed railings and above all GM RAILING® Windoorail, the glass railing for French windows.

“We would be delighted to welcome you at our trade fair stand in **Hall 7, No. 148** within the scope of the “fensterbau frontale” trade fair in Nuremberg from **24/3/2010** to **27/3/2010**.”

The GM RAILING® Team

GM RAILING® Windoorail

- Guardrail function
- Inspected according to TRAV, equipped with type statics and general certificate of approval (ABP)
- 100-fold original component tests
- Continuous module widths of up to 2 m
- Various building connections
- Simple ordering via the web-shop
- 7 day delivery period for the expert programme**

** see Terms of Delivery Expert Programme

Contact & Imprint

News about GM RAILING® products
Number 6, March 2010
Owner, editor and responsible
for the content:

Glas Marte GmbH
GM RAILING®
Brachsenweg 39
6900 Bregenz, Austria

Phone +43 (0)5574 6722-340
Fax +43 (0)5574 6722-544
railing@glasmarte.at
www.gm-railing.com

glas **marte**®
railing